

# County Health Rankings & Roadmaps

Building a Culture of Health, County by County

A Robert Wood Johnson Foundation program

## 2014 *Rankings*

# Illinois



A collaboration between the Robert Wood Johnson Foundation and the University of Wisconsin Population Health Institute.



Support  
provided by

Robert Wood Johnson  
Foundation



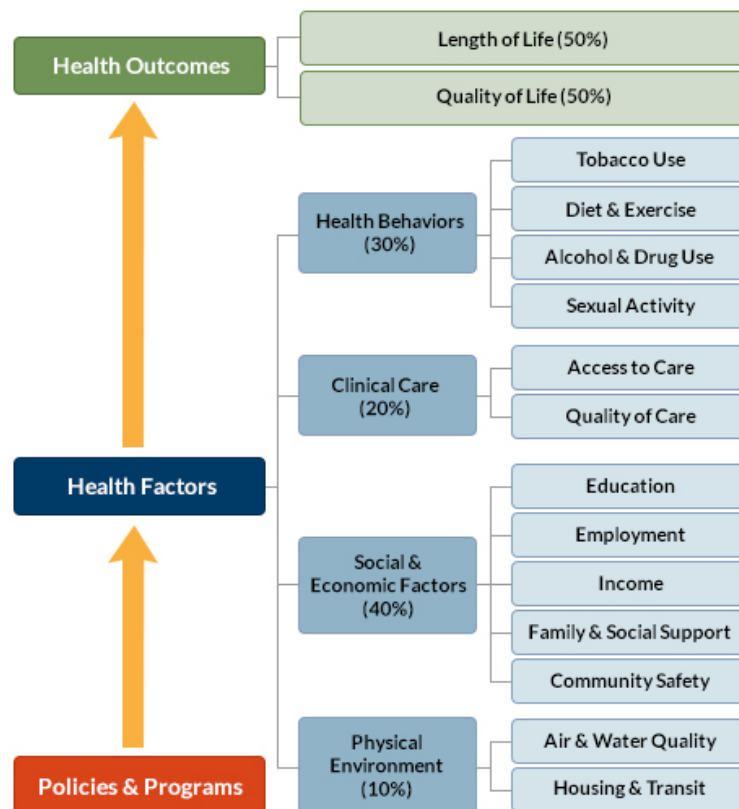
INSIDE FRONT COVER – INTENTIONALLY BLANK

## INTRODUCTION

The *County Health Rankings & Roadmaps* program helps communities identify and implement solutions that make it easier for people to be healthy in their schools, workplaces, and neighborhoods. Ranking the health of nearly every county in the nation, the *County Health Rankings* illustrate *what we know* when it comes to what is making people sick or healthy. The *Roadmaps* show *what we can do* to create healthier places to live, learn, work, and play. The Robert Wood Johnson Foundation (RWJF) collaborates with the University of Wisconsin Population Health Institute (UWPHI) to bring this program to cities, counties, and states across the nation.

## WHAT ARE THE COUNTY HEALTH RANKINGS?

The *County Health Rankings* measure the health of nearly every county in the nation. Published online at [countyhealthrankings.org](http://countyhealthrankings.org), the *Rankings* help counties understand what influences how healthy residents are and how long they will live. The *Rankings* look at a variety of measures that affect health, such as high school graduation rates, access to healthy foods, rates of smoking, obesity, and teen births. Based on data available for each county, the *Rankings* are unique in their ability to measure the overall health of each county in all 50 states. They have been used to garner support for local health improvement initiatives among government agencies, healthcare providers, community organizations, business leaders, policy makers, and the public.



## HOW ARE PEOPLE USING THE RANKINGS?

- Ø Highlighting community success
- Ø Identifying root causes of poor health
- Ø Supporting policy change
- Ø Engaging communities in health improvement

For more information, visit [countyhealthrankings.org](http://countyhealthrankings.org)

## WHAT ARE THE ROADMAPS TO HEALTH?

The *Roadmaps to Health* help communities bring people together to look at the many factors that influence health, select strategies that work, and make changes that will have a lasting impact. The *Roadmaps* focus on helping communities determine what they can do and what they can learn from others.

### What You Can Do

The *Roadmaps to Health* Action Center provides step-by-step guides, tools, and webinars to help groups working to improve the health of their communities. Community Coaches also provide customized consultation to local communities that have demonstrated a willingness to address factors that we know influence health, such as education, income, and community safety.

The Action Center also features *What Works for Health* – a searchable database of evidence-informed policies and programs that can improve health.

### Learning From Others

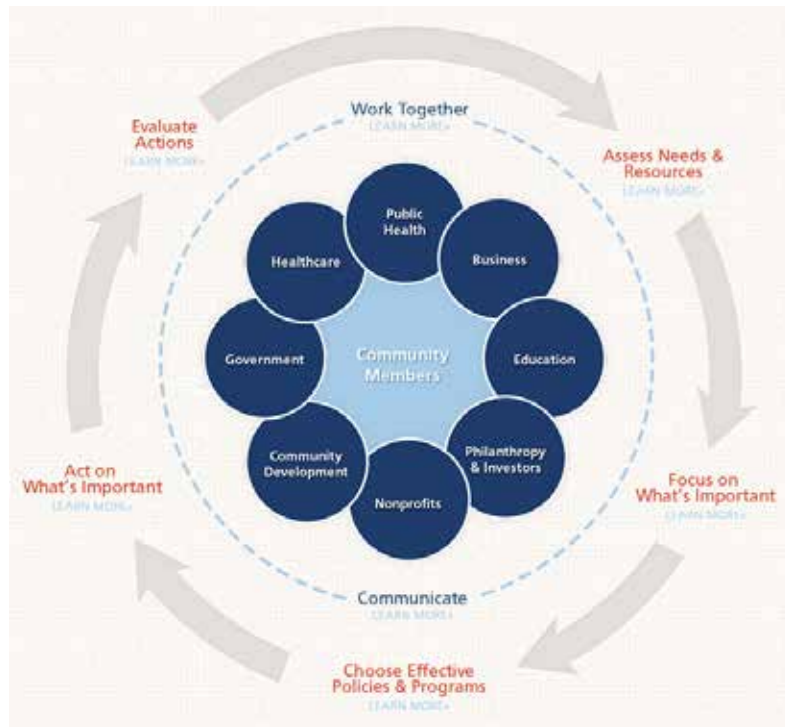
Honoring the efforts of communities working at the forefront of health improvement, the Robert Wood

Johnson Foundation annually awards the *RWJF Culture of Health Prize* to outstanding communities that are working toward better health. The *Prize* recognizes communities with strong and diverse partnerships that are coming together with a shared vision and commitment to address multiple factors that affect health and make lasting changes that create a culture of health for all. Visit [countyhealthrankings.org](http://countyhealthrankings.org) or [rwjf.org/prize](http://rwjf.org/prize) to learn about the work of past prize winners.

At [countyhealthrankings.org](http://countyhealthrankings.org), we also feature stories from communities across the nation who have used data from the *County Health Rankings* or have engaged in strategies to improve health. For example, you can learn from the successes and challenges of the 30 *Roadmaps to Health* Community Grantees. These grantees are working to create positive policy or systems changes that address social and economic factors that influence how healthy people are and how long they live, such as education and community safety. You might also want to contact your local affiliate of United Way Worldwide, the National Business Coalition on Health, or the National Association of Counties - their national parent organizations have partnered with us to raise awareness and stimulate action to improve health in their local members' communities.

## How can you get involved?

In communities large and small, people from all walks of life are taking ownership and action to improve health. Visit [countyhealthrankings.org](http://countyhealthrankings.org) to get ideas and guidance on how you can take action in your community. Working with others, you can improve the health of your community.



The green map below shows the distribution of Illinois's **health outcomes**, based on an equal weighting of length and quality of life.

Lighter colors indicate better performance in the respective summary rankings. Detailed information on the underlying measures is available on our web site.

### HEALTH OUTCOMES RANKS

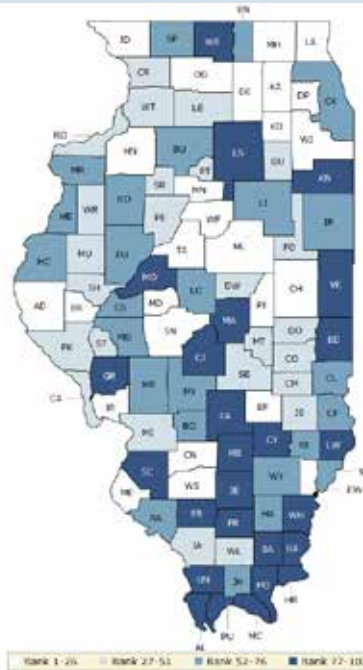


County	Rank	County	Rank	County	Rank	County	Rank
Adams	42	Ford	48	Livingston	88	Randolph	46
Alexander	102	Franklin	100	Logan	82	Richland	55
Bond	54	Fulton	63	Macon	84	Rock Island	53
Boone	18	Gallatin	101	Macoupin	45	Saline	99
Brown	8	Greene	68	Madison	76	Sangamon	81
Bureau	34	Grundy	44	Marion	92	Schuyler	4
Calhoun	20	Hamilton	87	Marshall	78	Scott	40
Carroll	65	Hancock	26	Mason	93	Shelby	19
Cass	43	Hardin	94	Massac	97	St. Clair	89
Champaign	23	Henderson	30	McDonough	11	Stark	38
Christian	80	Henry	16	McHenry	14	Stephenson	73
Clark	58	Iroquois	56	McLean	31	Tazewell	27
Clay	52	Jackson	83	Menard	29	Union	69
Clinton	12	Jasper	70	Mercer	15	Vermilion	95
Coles	50	Jefferson	90	Monroe	28	Wabash	66
Cook	75	Jersey	32	Montgomery	77	Warren	37
Crawford	85	Jo Daviess	5	Morgan	36	Washington	39
Cumberland	49	Johnson	57	Moultrie	33	Wayne	47
De Witt	61	Kane	9	Ogle	24	White	74
DeKalb	10	Kankakee	71	Peoria	59	Whiteside	17
Douglas	7	Kendall	2	Perry	64	Will	25
DuPage	3	Knox	72	Piatt	21	Williamson	86
Edgar	62	Lake	13	Pike	6	Winnebago	79
Edwards	96	LaSalle	67	Pope	60	Woodford	1
Effingham	22	Lawrence	91	Pulaski	98		
Fayette	41	Lee	35	Putnam	51		

The blue map displays Illinois's summary ranks for **health factors**, based on weighted scores for health behaviors, clinical care, social and economic factors, and the physical environment.

Lighter colors indicate better performance in the respective summary rankings. Detailed information on the underlying measures is available on our web site.

### HEALTH FACTORS RANKS



County	Rank	County	Rank	County	Rank	County	Rank
Adams	16	Ford	33	Livingston	58	Randolph	75
Alexander	102	Franklin	90	Logan	60	Richland	57
Bond	68	Fulton	62	Macon	93	Rock Island	27
Boone	66	Gallatin	91	Macoupin	65	Saline	95
Brown	10	Greene	88	Madison	46	Sangamon	22
Bureau	61	Grundy	38	Marion	100	Schuyler	32
Calhoun	47	Hamilton	67	Marshall	23	Scott	43
Carroll	50	Hancock	56	Mason	80	Shelby	49
Cass	73	Hardin	98	Massac	87	St. Clair	89
Champaign	12	Henderson	63	McDonough	29	Stark	28
Christian	77	Henry	17	McHenry	8	Stephenson	64
Clark	71	Iroquois	69	McLean	5	Tazewell	9
Clay	84	Jackson	40	Menard	15	Union	82
Clinton	14	Jasper	48	Mercer	54	Vermilion	99
Coles	34	Jefferson	81	Monroe	4	Wabash	55
Cook	74	Jersey	18	Montgomery	59	Warren	37
Crawford	76	Jo Daviess	13	Morgan	53	Washington	19
Cumberland	42	Johnson	72	Moultrie	30	Wayne	52
De Witt	45	Kane	21	Ogle	24	White	78
DeKalb	26	Kankakee	94	Peoria	41	Whiteside	36
Douglas	44	Kendall	3	Perry	86	Will	25
DuPage	1	Knox	70	Piatt	6	Williamson	51
Edgar	83	Lake	7	Pike	39	Winnebago	97
Edwards	20	LaSalle	79	Pope	92	Woodford	2
Effingham	11	Lawrence	85	Pulaski	101		
Fayette	96	Lee	35	Putnam	31		

## Summary Health Outcomes & Health Factors Rankings

Counties receive two ranks:

- Health Outcomes
- Health Factors

Each of these ranks represents a weighted summary of a number of measures.

Health outcomes represent how healthy a county is while health factors represent what influences the health of the county.

Rank	Health Outcomes	Rank	Health Factors
1	Woodford	1	DuPage
2	Kendall	2	Woodford
3	DuPage	3	Kendall
4	Schuyler	4	Monroe
5	Jo Daviess	5	McLean
6	Pike	6	Piatt
7	Douglas	7	Lake
8	Brown	8	McHenry
9	Kane	9	Tazewell
10	DeKalb	10	Brown
11	McDonough	11	Effingham
12	Clinton	12	Champaign
13	Lake	13	Jo Daviess
14	McHenry	14	Clinton
15	Mercer	15	Menard
16	Henry	16	Adams
17	Whiteside	17	Henry
18	Boone	18	Jersey
19	Shelby	19	Washington
20	Calhoun	20	Edwards
21	Piatt	21	Kane
22	Effingham	22	Sangamon
23	Champaign	23	Marshall
24	Ogle	24	Ogle
25	Will	25	Will
26	Hancock	26	DeKalb
27	Tazewell	27	Rock Island
28	Monroe	28	Stark
29	Menard	29	McDonough
30	Henderson	30	Moultrie
31	McLean	31	Putnam
32	Jersey	32	Schuyler
33	Moultrie	33	Ford
34	Bureau	34	Coles
35	Lee	35	Lee
36	Morgan	36	Whiteside
37	Warren	37	Warren
38	Stark	38	Grundy
39	Washington	39	Pike
40	Scott	40	Jackson

Rank	Health Outcomes	Rank	Health Factors
41	Fayette	41	Peoria
42	Adams	42	Cumberland
43	Cass	43	Scott
44	Grundy	44	Douglas
45	Macoupin	45	De Witt
46	Randolph	46	Madison
47	Wayne	47	Calhoun
48	Ford	48	Jasper
49	Cumberland	49	Shelby
50	Coles	50	Carroll
51	Putnam	51	Williamson
52	Clay	52	Wayne
53	Rock Island	53	Morgan
54	Bond	54	Mercer
55	Richland	55	Wabash
56	Iroquois	56	Hancock
57	Johnson	57	Richland
58	Clark	58	Livingston
59	Peoria	59	Montgomery
60	Pope	60	Logan
61	De Witt	61	Bureau
62	Edgar	62	Fulton
63	Fulton	63	Henderson
64	Perry	64	Stephenson
65	Carroll	65	Macoupin
66	Wabash	66	Boone
67	LaSalle	67	Hamilton
68	Greene	68	Bond
69	Union	69	Iroquois
70	Jasper	70	Knox
71	Kankakee	71	Clark
72	Knox	72	Johnson
73	Stephenson	73	Cass
74	White	74	Cook
75	Cook	75	Randolph
76	Madison	76	Crawford
77	Montgomery	77	Christian
78	Marshall	78	White
79	Winnebago	79	LaSalle
80	Christian	80	Mason
81	Sangamon	81	Jefferson
82	Logan	82	Union
83	Jackson	83	Edgar
84	Macon	84	Clay
85	Crawford	85	Lawrence
86	Williamson	86	Perry
87	Hamilton	87	Massac
88	Livingston	88	Greene



Rank	Health Outcomes	Rank	Health Factors
89	St. Clair	89	St. Clair
90	Jefferson	90	Franklin
91	Lawrence	91	Gallatin
92	Marion	92	Pope
93	Mason	93	Macon
94	Hardin	94	Kankakee
95	Vermilion	95	Saline
96	Edwards	96	Fayette
97	Massac	97	Winnebago
98	Pulaski	98	Hardin
99	Saline	99	Vermilion
100	Franklin	100	Marion
101	Gallatin	101	Pulaski
102	Alexander	102	Alexander

## 2014 County Health Rankings: Measures, Data Sources, and Years of Data

	Measure	Data Source	Years of Data
<b>HEALTH OUTCOMES</b>			
<b>Length of Life</b>	Premature death	National Center for Health Statistics	2008-2010
<b>Quality of Life</b>	Poor or fair health	Behavioral Risk Factor Surveillance System	2006-2012
	Poor physical health days	Behavioral Risk Factor Surveillance System	2006-2012
	Poor mental health days	Behavioral Risk Factor Surveillance System	2006-2012
	Low birthweight	National Center for Health Statistics	2005-2011
<b>HEALTH FACTORS</b>			
<b>HEALTH BEHAVIORS</b>			
<b>Tobacco Use</b>	Adult smoking	Behavioral Risk Factor Surveillance System	2006-2012
<b>Diet and Exercise</b>	Adult obesity	National Center for Chronic Disease Prevention and Health Promotion	2010
	Food environment index	USDA Food Environment Atlas, Map the Meal Gap	2010-2011
	Physical inactivity	National Center for Chronic Disease Prevention and Health Promotion	2010
	Access to exercise opportunities	OneSource Global Business Browser, Delorme map data, ESRI, & US Census Tigerline Files	2010 & 2012
<b>Alcohol and Drug Use</b>	Excessive drinking	Behavioral Risk Factor Surveillance System	2006-2012
	Alcohol-impaired driving deaths	Fatality Analysis Reporting System	2008-2012
<b>Sexual Activity</b>	Sexually transmitted infections	National Center for HIV/AIDS, Viral Hepatitis, STD, and TB prevention	2011
	Teen births	National Center for Health Statistics	2005-2011
<b>CLINICAL CARE</b>			
<b>Access to Care</b>	Uninsured	Small Area Health Insurance Estimates	2011
	Primary care physicians	HRSA Area Resource File	2011
	Dentists	HRSA Area Resource File	2012
	Mental health providers	CMS, National Provider Identification	2013
<b>Quality of Care</b>	Preventable hospital stays	Medicare/Dartmouth Institute	2011
	Diabetic screening	Medicare/Dartmouth Institute	2011
	Mammography screening	Medicare/Dartmouth Institute	2011
<b>SOCIAL AND ECONOMIC FACTORS</b>			
<b>Education</b>	High school graduation	data.gov, supplemented with National Center for Education Statistics	2010-2011
	Some college	American Community Survey	2008-2012
<b>Employment</b>	Unemployment	Bureau of Labor Statistics	2012
<b>Income</b>	Children in poverty	Small Area Income and Poverty Estimates	2012
<b>Family and Social Support</b>	Inadequate social support	Behavioral Risk Factor Surveillance System	2005-2010
	Children in single-parent households	American Community Survey	2008-2012
<b>Community Safety</b>	Violent crime	Uniform Crime Reporting - FBI	2009-2011
	Injury deaths	CDC WONDER	2006-2010
<b>PHYSICAL ENVIRONMENT</b>			
<b>Air and Water Quality</b>	Air pollution - particulate matter <sup>1</sup>	CDC WONDER	2011
	Drinking water violations	Safe Drinking Water Information System	FY 2012-2013
<b>Housing and Transit</b>	Severe housing problems	HUD, Comprehensive Housing Affordability Strategy	2006-2010
	Driving alone to work	American Community Survey	2008-2012
	Long commute – driving alone	American Community Survey	2008-2012

<sup>1</sup> Not available for AK and HI.

## CREDITS

### **Report Authors**

University of Wisconsin-Madison  
School of Medicine and Public Health  
Department of Population Health Sciences  
Population Health Institute

Bridget Catlin, PhD, MHSA  
Amanda Jovaag, MS  
Julie Willems Van Dijk, PhD, RN  
Patrick Remington, MD, MPH

This publication would not have been possible without the following contributions:

### ***Data***

Centers for Disease Control and Prevention: National Center for Health Statistics and Division of Behavioral Surveillance  
Dartmouth Institute for Health Policy & Clinical Practice

### ***Research Assistance***

Jennifer Buechner  
Hyojun Park, MA  
Elizabeth Pollock  
Jennifer Robinson  
Matthew Rodock, MPH  
Anne Roubal, MS

### ***Communications and Outreach***

Burness Communications  
Alison Bergum, MPA  
Matthew Call  
Kate Konkle, MPH  
Kitty Jerome, MA  
Karen Odegaard, MPH  
Jan O'Neill, MPA

### ***Design***

Forum One, Alexandria, VA

### ***Robert Wood Johnson Foundation***

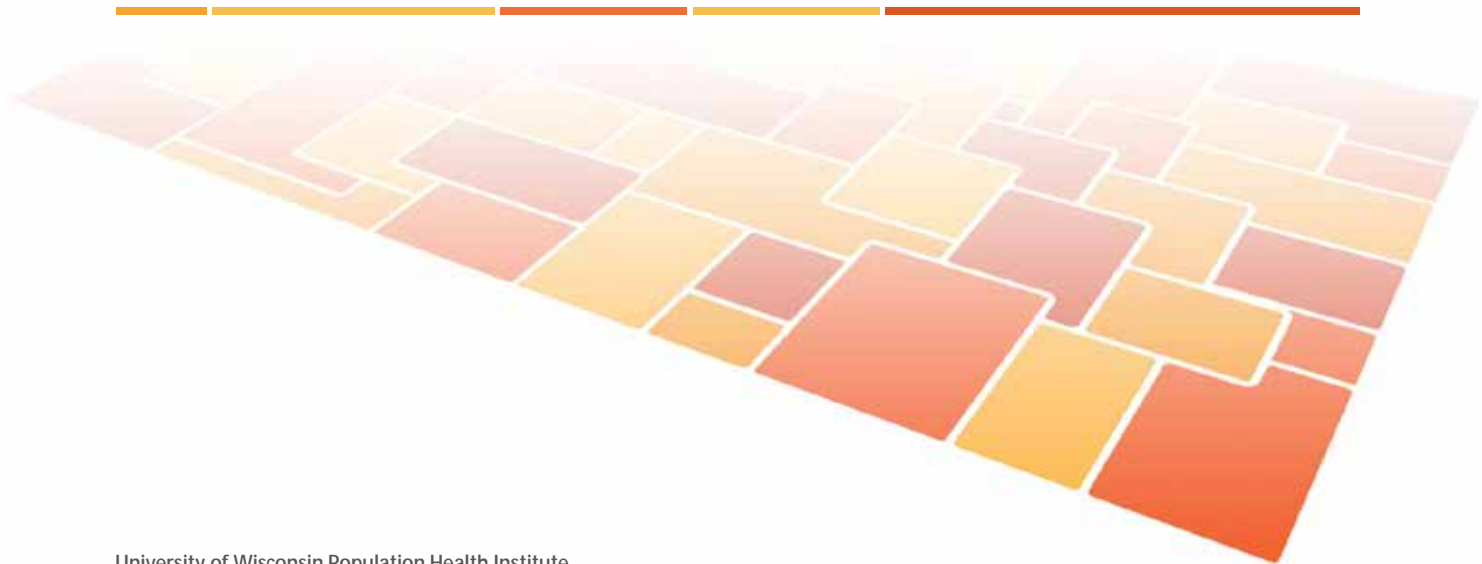
Abbey Cofsky, MPH – Senior Program Officer  
Michelle Larkin, JD, MS, RN – Assistant Vice-President, Program Portfolios  
Marjorie Paloma, MPH – Senior Policy Advisor  
James S. Marks, MD, MPH – Senior Vice-President and Director, Program Portfolios  
Joe Marx – Senior Communications Officer

Suggested citation: University of Wisconsin Population Health Institute. *County Health Rankings 2014*.

# County Health Rankings & Roadmaps

Building a Culture of Health, County by County

[countyhealthrankings.org](http://countyhealthrankings.org)



University of Wisconsin Population Health Institute  
610 Walnut St, #524, Madison, WI 53726  
(608) 265-8240 / [info@countyhealthrankings.org](mailto:info@countyhealthrankings.org)

