

Kane County, Illinois Influenza-Like-Illness Surveillance October 2008 to April 2009***

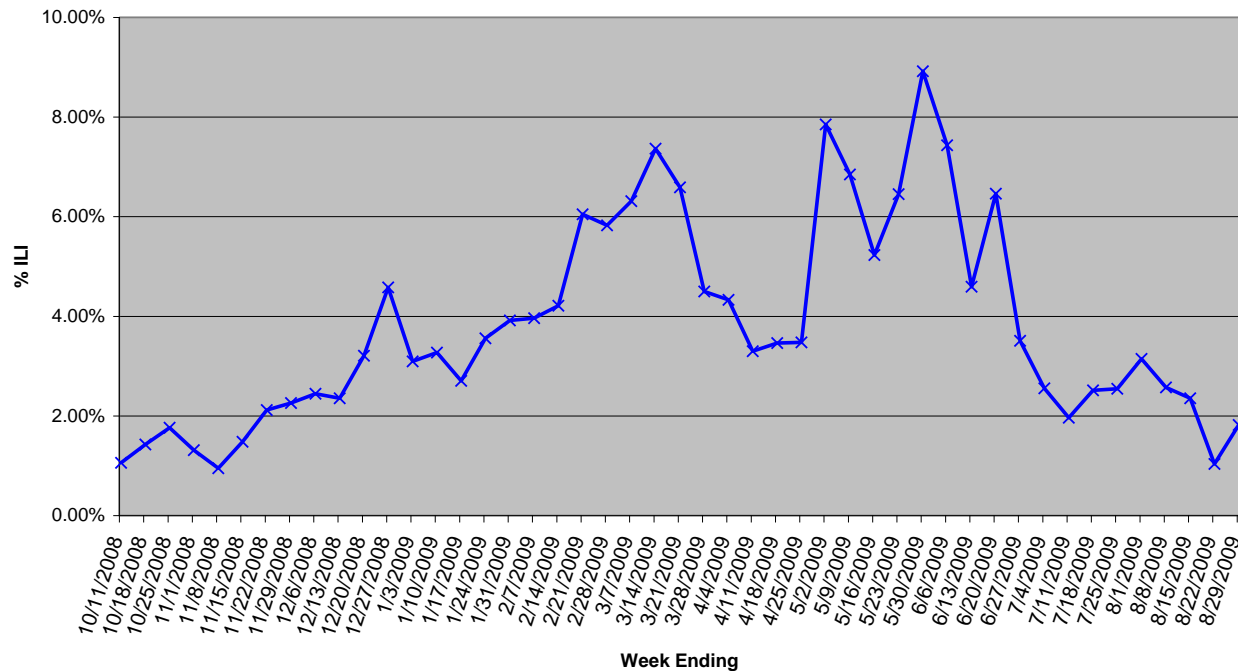
During the months October through April, the Kane County Health Department tracks influenza activity in our county by monitoring

- Visits to Emergency Departments for Influenza Like Illness¹
- Hospital laboratory testing for influenza
- Absenteeism in schools grades K-12

***Data collection for Emergency Department visits and laboratory testing was extended through the summer months to monitor Novel H1N1 Influenza A activity.

The health department would like to thank the participating hospital and school district employees who provide weekly reports that make this monitoring possible. Below are graphs representing the percentage of ER patients that were seen with ILI, the average absenteeism rate from a sampling of elementary, middle and high schools in Kane County and influenza laboratory testing activity.

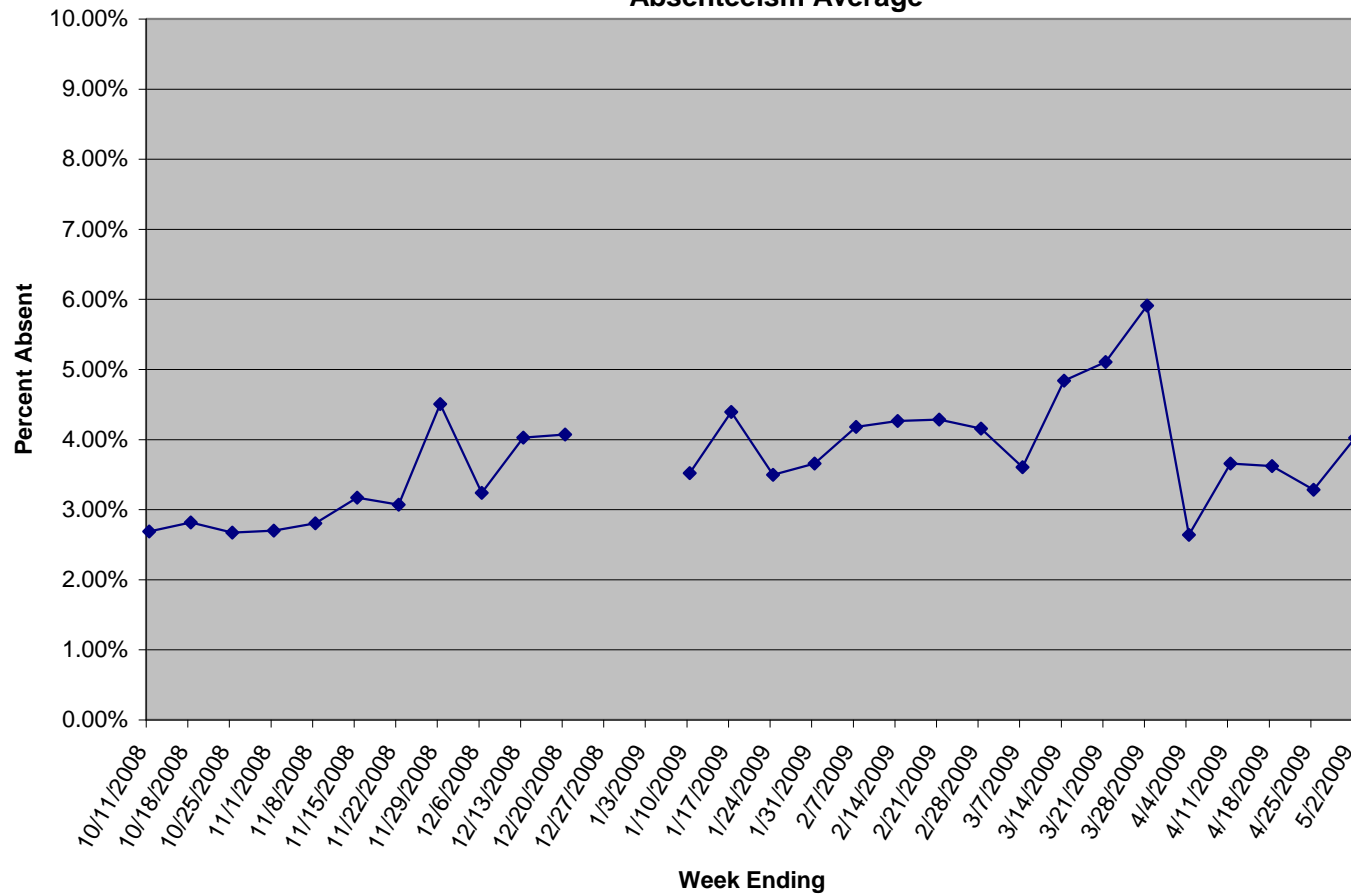
**Kane County Health Department
2008-2009 Influenza-Like-Illness Surveillance
Participating Emergency Rooms (N=2)
Percent of Patient Visits for ILI**



¹Influenza-like- illness (ILI) is defined as fever > 100° F with cough or sore throat without other known cause

Kane County, Illinois Influenza-Like-Illness Surveillance October 2008 to April 2009***

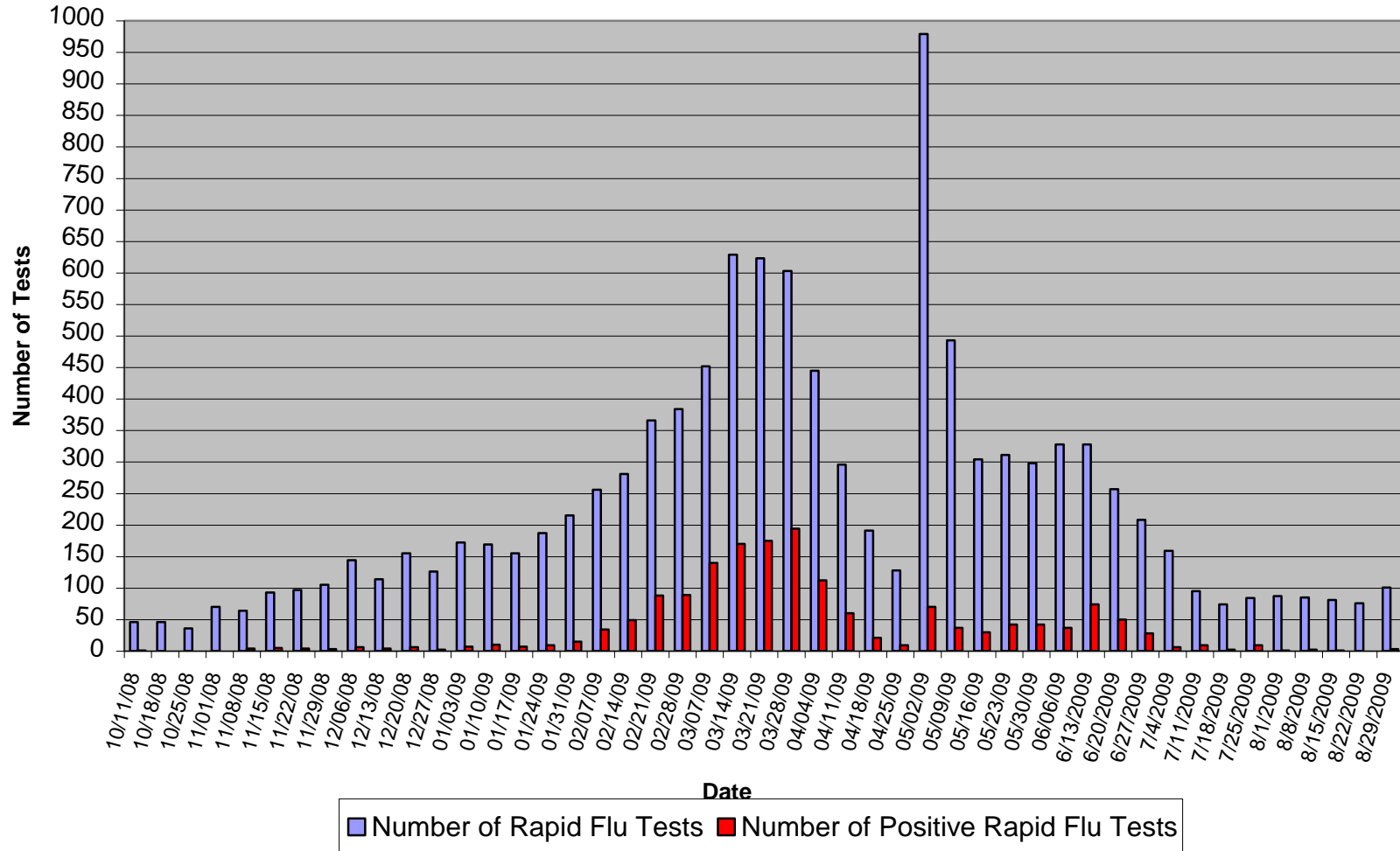
Kane County Health Department
2008-2009 Influenza-Like-Illness Surveillance
Participating Schools (N = 19)
Absenteeism Average



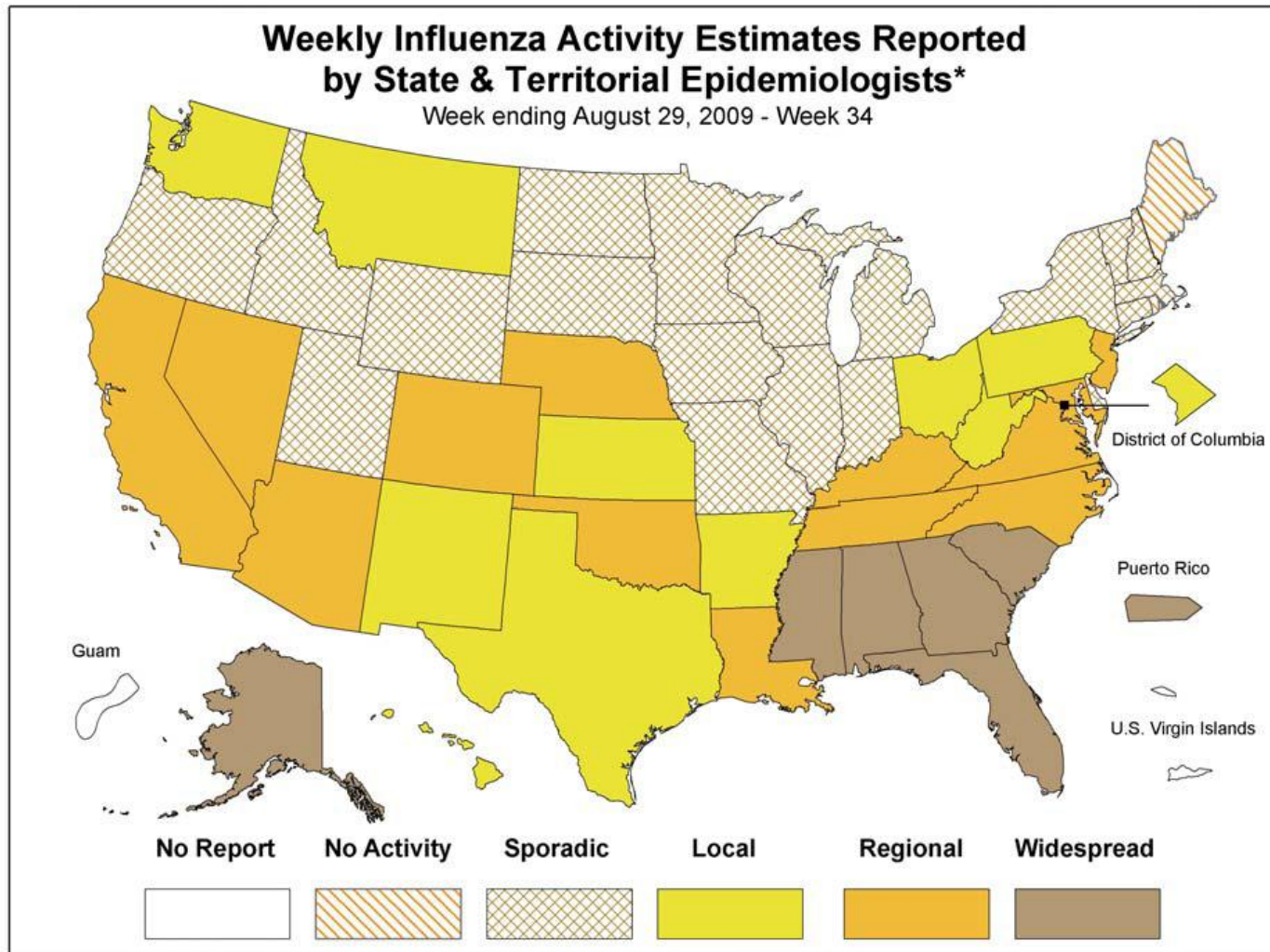
No reports for weeks ending 12/27/09 and 01/03/09 due to winter break

Kane County, Illinois Influenza-Like-Illness Surveillance October 2008 to April 2009***

**Kane County Health Department
2008-2009 Influenza-Like-Illness Surveillance
Participating Laboratories (N=6)
Rapid Influenza Testing**



Kane County, Illinois Influenza-Like-Illness Surveillance October 2008 to April 2009***



* This map indicates geographic spread & does not measure the severity of influenza activity