



# County Health Rankings & Roadmaps

A Healthier Nation, County by County

## 2012 *Rankings* **Illinois**



Robert Wood Johnson Foundation



UNIVERSITY OF WISCONSIN

**Population Health Institute**

*Translating Research into Policy and Practice*



## Introduction

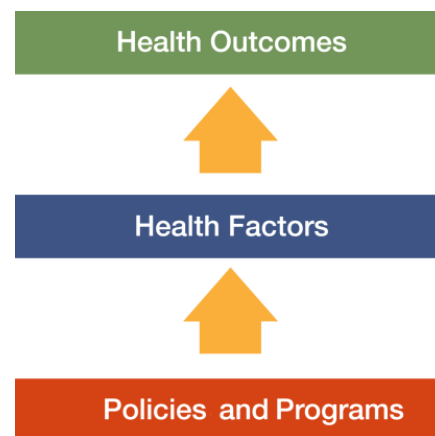
Where we live matters to our health. The health of a community depends on many different factors, including the environment, education and jobs, access to and quality of healthcare, and individual behaviors. We can improve a community's health by implementing effective policies and programs. For example, people who live in communities with smoke-free laws are less likely to smoke or to be exposed to second-hand smoke, which reduces lung cancer risk. In addition, people who live in communities with safe and accessible park and recreation space are more likely to exercise, which reduces heart disease risk.

However, health varies greatly across communities, with some places being much healthier than others. And, until now, there has been no standard method to illustrate what we know about what makes people sick or healthy or a central resource to identify what we can do to create healthier places to live, learn, work and play.

We know that much of what influences our health happens outside of the doctor's office – in our schools, workplaces and neighborhoods. The *County Health Rankings & Roadmaps* program provides information on the overall health of your community and provides the tools necessary to create community-based, evidence-informed solutions. Ranking the health of nearly every county across the nation, the *County Health Rankings* illustrate **what we know** when it comes to what is making communities sick or healthy. The *County Health Roadmaps* show **what we can do** to create healthier places to live, learn, work and play. The Robert Wood Johnson Foundation collaborates with the University of Wisconsin

Population Health Institute to bring this groundbreaking program to counties and states across the nation.

The *County Health Rankings & Roadmaps* program includes the *County Health Rankings* project, launched in 2010, and the newer *Roadmaps* project that mobilizes local communities, national partners and leaders across all sectors to improve health. The program is based on this model of population health improvement:



In this model, health outcomes are measures that describe the current health status of a county. These health outcomes are influenced by a set of health factors. Counties can improve health outcomes by addressing all health factors with effective, evidence-informed policies and programs.

Everyone has a stake in community health. We all need to work together to find solutions. The *County Health Rankings & Roadmaps* serve as both a call to action and a needed tool in this effort.

## Guide to Our Web Site

To compile the *Rankings*, we selected measures that reflect important aspects of population health that can be improved and are available at the county level across the nation. Visit [www.countyhealthrankings.org](http://www.countyhealthrankings.org) to learn more.

To get started and see data, enter your county or state name in the search box. Click on the name of a county or measure to see more details. You can: Compare Counties; Download data for your state; Print one or more county

snapshots; or Share information with others via Facebook, Twitter, or Google+. To understand our methods, click on Learn about the Data and Methods. To learn about steps that you can take to improve health in your community, click on the *Roadmaps* tab. The *Roadmaps to Health Action Center* provides tools and resources to help groups working together to create healthier places. The Opportunities section provides information on funding, recognition, and partnership opportunities. The Connections section helps you learn what others are doing.

## County Health Roadmaps

The *Rankings* illustrate **what we know** when it comes to making people sick or healthy. The *County Health Rankings* confirm the critical role that factors such as education, jobs, income and the environment play in how healthy people are and how long we live.

This report introduces the *County Health Roadmaps*, a new partnership that mobilizes local communities, national partners and leaders across all sectors to improve health. The *County Health Roadmaps* show **what we can do** to create healthier places to live, learn, work and play. The Robert Wood Johnson Foundation collaborates with the University of Wisconsin Population Health Institute to bring this groundbreaking project to cities, counties and states across the nation.

The *Roadmaps* project includes grants to local coalitions and partnerships among policymakers, business, education, public health, health care, and community organizations; grants to national organizations working to improve health; recognition of communities whose promising efforts have led to better health; and customized technical assistance on strategies to improve health.

### Roadmaps to Health Community Grants

The *Roadmaps to Health* Community Grants provide funding for 2 years to state and local efforts among policymakers, business, education, healthcare, public health and community organizations working to create positive policy or systems changes that address the social and economic factors that influence the health of people in their community.

### Roadmaps to Health Partner Grants

The Robert Wood Johnson Foundation is awarding *Roadmaps to Health* Partner Grants to national organizations that are experienced at engaging local partners and leaders and are able to deliver high-quality training and technical assistance, and committed to making communities healthier places to live, learn, work and play. Partner grantees increase awareness about the *County Health Rankings & Roadmaps* to their members, affiliates and allies. The first Partner Grant was awarded to United Way Worldwide (UWW) in July 2011.

### Roadmaps to Health Prize

The Robert Wood Johnson Foundation and the University of Wisconsin Population Health Institute will award *Roadmaps to Health* Prizes of \$25,000 to up to six communities that are working to become healthier places to live, learn, work and play. The *Roadmaps to Health* Prize is intended not only to honor successful efforts, but also to inspire and stimulate similar activities in other U.S. communities.



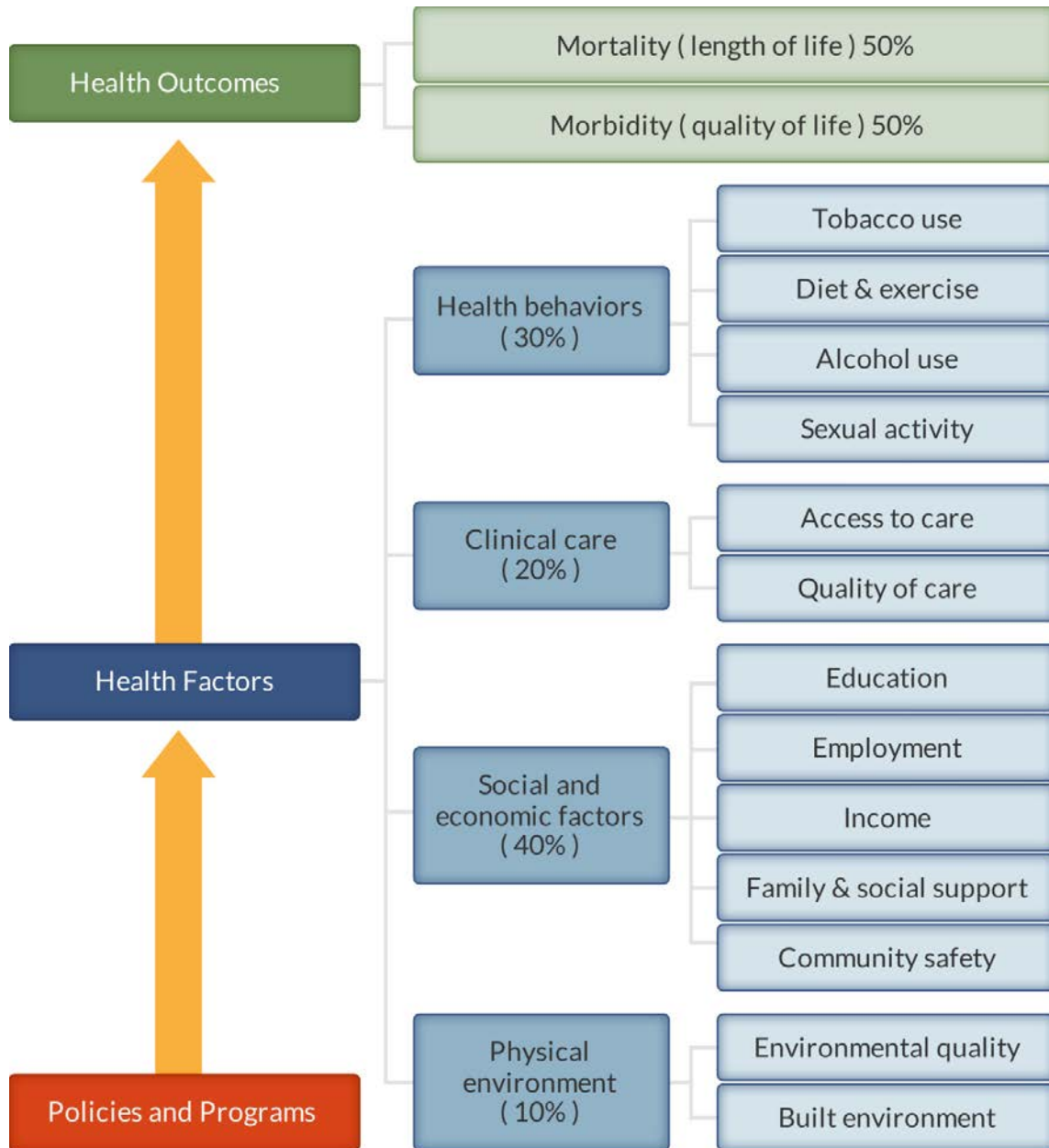
### Roadmaps to Health Action Center

The *Roadmaps to Health* Action Center, based at the University of Wisconsin Population Health Institute, provides tools and resources to help groups working to make their communities healthier places. The new Action Center will provide guidance on developing strategies and advocacy efforts to advance pro-health policies, offer opportunities for ongoing learning, and in the summer of 2012, host a searchable database of evidence-informed policies and programs focused on health improvement. Experts provide customized consultation to local communities who have demonstrated the willingness and capacity to address factors that we know influence how healthy a person is, such as education, income and family connectedness.

## County Health Rankings

The 2012 *County Health Rankings* report ranks Illinois counties according to their summary measures of **health outcomes** and **health factors**. Counties also receive a rank for mortality, morbidity, health behaviors, clinical care, social and economic factors, and the physical environment. The figure below depicts the structure of the *Rankings* model; those having high ranks (e.g., 1 or 2) are estimated to be the “healthiest.”

Our summary **health outcomes** rankings are based on an equal weighting of mortality and morbidity measures. The summary **health factors** rankings are based on weighted scores of four types of factors: behavioral, clinical, social and economic, and environmental. The weights for the factors (shown in parentheses in the figure) are based upon a review of the literature and expert input, but represent just one way of combining these factors.

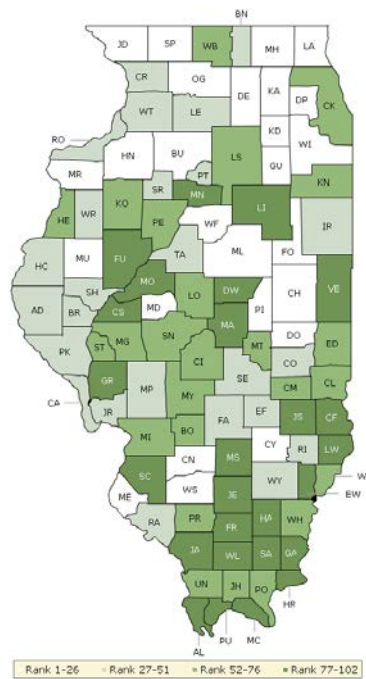


County Health Rankings model ©2012 UWPHI

The maps on this page and the next display Illinois's counties divided into groups by health rank. Maps help locate the healthiest and least healthy counties in the state. The lighter colors indicate better

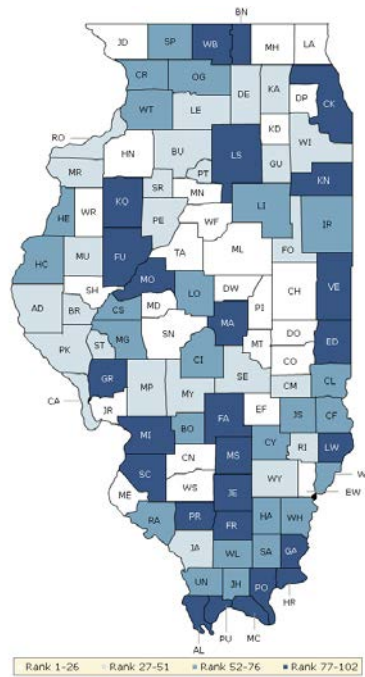
performance in the respective summary rankings. The green map shows the distribution of summary health outcomes. The blue displays the distribution of the summary rank for health factors.

### HEALTH OUTCOMES



County	Rank	County	Rank	County	Rank	County	Rank
Adams	50	Ford	11	Livingston	84	Randolph	35
Alexander	101	Franklin	97	Logan	60	Richland	49
Bond	70	Fulton	77	Macon	86	Rock Island	46
Boone	40	Gallatin	92	Macoupin	39	Saline	98
Brown	44	Greene	79	Madison	75	Sangamon	68
Bureau	25	Grundy	21	Marion	87	Schuyler	27
Calhoun	42	Hamilton	99	Marshall	89	Scott	54
Carroll	29	Hancock	33	Mason	82	Shelby	30
Cass	83	Hardin	102	Massac	96	St. Clair	94
Champaign	26	Henderson	65	McDonough	6	Stark	45
Christian	62	Henry	12	McHenry	5	Stephenson	22
Clark	63	Iroquois	43	McLean	18	Tazewell	34
Clay	24	Jackson	80	Menard	19	Union	53
Clinton	17	Jasper	81	Mercer	4	Vermilion	95
Coles	51	Jefferson	90	Monroe	13	Wabash	55
Cook	71	Jersey	41	Montgomery	76	Warren	48
Crawford	91	Jo Daviess	10	Morgan	57	Washington	15
Cumberland	58	Johnson	64	Moultrie	56	Wayne	36
De Witt	78	Kane	8	Ogle	14	White	52
DeKalb	23	Kankakee	74	Peoria	61	Whiteside	38
Douglas	7	Kendall	1	Perry	69	Will	16
DuPage	3	Knox	59	Piatt	20	Williamson	93
Edgar	67	Lake	9	Pike	28	Winnebago	73
Edwards	85	LaSalle	66	Pope	72	Woodford	2
Effingham	31	Lawrence	88	Pulaski	100		
Fayette	47	Lee	32	Putnam	37		

### HEALTH FACTORS



County	Rank	County	Rank	County	Rank	County	Rank
Adams	29	Ford	35	Livingston	68	Randolph	61
Alexander	102	Franklin	94	Logan	72	Richland	40
Bond	53	Fulton	79	Macon	96	Rock Island	38
Boone	82	Gallatin	87	Macoupin	49	Saline	69
Brown	39	Greene	84	Madison	78	Sangamon	16
Bureau	46	Grundy	44	Marion	97	Schuyler	17
Calhoun	27	Hamilton	71	Marshall	24	Scott	36
Carroll	56	Hancock	55	Mason	88	Shelby	42
Cass	57	Hardin	101	Massac	77	St. Clair	92
Champaign	10	Henderson	66	McDonough	28	Stark	34
Christian	63	Henry	26	McHenry	7	Stephenson	65
Clark	70	Iroquois	60	McLean	5	Tazewell	14
Clay	75	Jackson	41	Menard	11	Union	76
Clinton	13	Jasper	52	Mercer	47	Vermilion	99
Coles	15	Jefferson	89	Monroe	2	Wabash	58
Cook	86	Jersey	20	Montgomery	51	Warren	22
Crawford	62	Jo Daviess	8	Morgan	59	Washington	21
Cumberland	48	Johnson	73	Moultrie	23	Wayne	37
De Witt	25	Kane	30	Ogle	54	White	67
DeKalb	33	Kankakee	95	Peoria	45	Whiteside	74
Douglas	18	Kendall	4	Perry	85	Will	31
DuPage	1	Knox	81	Piatt	9	Williamson	64
Edgar	80	Lake	6	Pike	43	Winnebago	98
<b>Edwards</b>	<b>19</b>	<b>LaSalle</b>	<b>83</b>	<b>Pope</b>	<b>91</b>	<b>Woodford</b>	<b>3</b>
Effingham	12	Lawrence	90	Pulaski	100		
Fayette	93	Lee	50	Putnam	32		



## Summary Health Outcomes & Health Factors Rankings

Counties receive two summary ranks:

- Health Outcomes
- Health Factors

Each of these ranks represents a weighted summary of a number of measures.

Health outcomes represent how healthy a county is while health factors represent what influences the health of the county.

Rank	Health Outcomes	Rank	Health Factors
1	Kendall	1	DuPage
2	Woodford	2	Monroe
3	DuPage	3	Woodford
4	Mercer	4	Kendall
5	McHenry	5	McLean
6	McDonough	6	Lake
7	Douglas	7	McHenry
8	Kane	8	Jo Daviess
9	Lake	9	Piatt
10	Jo Daviess	10	Champaign
11	Ford	11	Menard
12	Henry	12	Effingham
13	Monroe	13	Clinton
14	Ogle	14	Tazewell
15	Washington	15	Coles
16	Will	16	Sangamon
17	Clinton	17	Schuyler
18	McLean	18	Douglas
19	Menard	19	Edwards
20	Piatt	20	Jersey
21	Grundy	21	Washington
22	Stephenson	22	Warren
23	DeKalb	23	Moultrie
24	Clay	24	Marshall
25	Bureau	25	De Witt
26	Champaign	26	Henry
27	Schuyler	27	Calhoun
28	Pike	28	McDonough
29	Carroll	29	Adams
30	Shelby	30	Kane
31	Effingham	31	Will
32	Lee	32	Putnam
33	Hancock	33	DeKalb
34	Tazewell	34	Stark
35	Randolph	35	Ford
36	Wayne	36	Scott
37	Putnam	37	Wayne
38	Whiteside	38	Rock Island
39	Macoupin	39	Brown
40	Boone	40	Richland
41	Jersey	41	Jackson
42	Calhoun	42	Shelby



Rank	Health Outcomes	Rank	Health Factors
43	Iroquois	43	Pike
44	Brown	44	Grundy
45	Stark	45	Peoria
46	Rock Island	46	Bureau
47	Fayette	47	Mercer
48	Warren	48	Cumberland
49	Richland	49	Macoupin
50	Adams	50	Lee
51	Coles	51	Montgomery
52	White	52	Jasper
53	Union	53	Bond
54	Scott	54	Ogle
55	Wabash	55	Hancock
56	Moultrie	56	Carroll
57	Morgan	57	Cass
58	Cumberland	58	Wabash
59	Knox	59	Morgan
60	Logan	60	Iroquois
61	Peoria	61	Randolph
62	Christian	62	Crawford
63	Clark	63	Christian
64	Johnson	64	Williamson
65	Henderson	65	Stephenson
66	LaSalle	66	Henderson
67	Edgar	67	White
68	Sangamon	68	Livingston
69	Perry	69	Saline
70	Bond	70	Clark
71	Cook	71	Hamilton
72	Pope	72	Logan
73	Winnebago	73	Johnson
74	Kankakee	74	Whiteside
75	Madison	75	Clay
76	Montgomery	76	Union
77	Fulton	77	Massac
78	De Witt	78	Madison
79	Greene	79	Fulton
80	Jackson	80	Edgar
81	Jasper	81	Knox
82	Mason	82	Boone
83	Cass	83	LaSalle
84	Livingston	84	Greene
85	Edwards	85	Perry
86	Macon	86	Cook
87	Marion	87	Gallatin
88	Lawrence	88	Mason
89	Marshall	89	Jefferson
90	Jefferson	90	Lawrence

Rank	Health Outcomes	Rank	Health Factors
91	Crawford	91	Pope
92	Gallatin	92	St. Clair
93	Williamson	93	Fayette
94	St. Clair	94	Franklin
95	Vermilion	95	Kankakee
96	Massac	96	Macon
97	Franklin	97	Marion
98	Saline	98	Winnebago
99	Hamilton	99	Vermilion
100	Pulaski	100	Pulaski
101	Alexander	101	Hardin
102	Hardin	102	Alexander

## 2012 County Health Rankings: Measures, Data Sources, and Years of Data

	Measure	Data Source	Years of Data
<b>HEALTH OUTCOMES</b>			
<b>Mortality</b>	Premature death	National Center for Health Statistics	2006-2008
<b>Morbidity</b>	Poor or fair health	Behavioral Risk Factor Surveillance System	2004-2010
	Poor physical health days	Behavioral Risk Factor Surveillance System	2004-2010
	Poor mental health days	Behavioral Risk Factor Surveillance System	2004-2010
	Low birthweight	National Center for Health Statistics	2002-2008
<b>HEALTH FACTORS</b>			
<b>HEALTH BEHAVIORS</b>			
<b>Tobacco Use</b>	Adult smoking	Behavioral Risk Factor Surveillance System	2004-2010
<b>Diet and Exercise</b>	Adult obesity	National Center for Chronic Disease Prevention and Health Promotion	2009
	Physical inactivity	National Center for Chronic Disease Prevention and Health Promotion	2009
<b>Alcohol Use</b>	Excessive drinking	Behavioral Risk Factor Surveillance System	2004-2010
	Motor vehicle crash death rate	National Center for Health Statistics	2002-2008
<b>Sexual Activity</b>	Sexually transmitted infections	National Center for Hepatitis, HIV, STD and TB Prevention	2009
	Teen birth rate	National Center for Health Statistics	2002-2008
<b>CLINICAL CARE</b>			
<b>Access to Care</b>	Uninsured	Small Area Health Insurance Estimates	2009
	Primary care physicians	Health Resources & Services Administration	2009
<b>Quality of Care</b>	Preventable hospital stays	Medicare/Dartmouth Institute	2009
	Diabetic screening	Medicare/Dartmouth Institute	2009
	Mammography screening	Medicare/Dartmouth Institute	2009
<b>SOCIAL AND ECONOMIC FACTORS</b>			
<b>Education</b>	High school graduation	National Center for Education Statistics and state-specific sources <sup>1</sup>	2008-2010
	Some college	American Community Survey	2006-2010
<b>Employment</b>	Unemployment	Bureau of Labor Statistics	2010
<b>Income</b>	Children in poverty	Small Area Income and Poverty Estimates	2010
<b>Family and Social Support</b>	Inadequate social support	Behavioral Risk Factor Surveillance System	2006-2010
	Children in single-parent households	American Community Survey	2006-2010
<b>Community Safety</b>	Violent crime rate <sup>2</sup>	Federal Bureau of Investigation	2007-2009
<b>PHYSICAL ENVIRONMENT</b>			
<b>Environmental Quality</b> <sup>3</sup>	Air pollution-particulate matter days	U.S. Environmental Protection Agency	2007
	Air pollution-ozone days	U.S. Environmental Protection Agency	2007
<b>Built Environment</b>	Access to recreational facilities	Census County Business Patterns	2009
	Limited access to healthy foods <sup>4</sup>	U.S. Department of Agriculture	2006
	Fast food restaurants	Census County Business Patterns	2009

<sup>1</sup> NCES used for AK, AL, AR, CA, CT, FL, HI, ID, KY, MT, ND, NJ, OK, SD and TN

<sup>2</sup> State data source for IL.

<sup>3</sup> Not available for AK and HI.

<sup>4</sup> Access to Healthy Foods (2009) from Census Zip Code Business Patterns for AK and HI.

CREDITS

**Report Authors**

University of Wisconsin-Madison  
School of Medicine and Public Health  
Department of Population Health Sciences  
Population Health Institute

Bridget Booske Catlin, PhD, MHSA  
Amanda Jovaag, MS  
Patrick Remington, MD, MPH

This publication would not have been possible without the following contributions:

**Technical Advisor**

Amy Bernstein, ScD, Centers for Disease Control and Prevention

**Research Assistance**

Jennifer Buechner  
Hyojun Park, MA  
Jennifer Robinson  
Matthew Rodock, MPH  
Anne Roubal

**Communications and Outreach**

Burness Communications  
Anna Grilley  
Anna Graupner, MPH  
Kate Konkle, MPH  
Angela Russell, MS  
Julie Willems Van Dijk, PhD, RN

**Design**

Forum One, Alexandria, VA  
Media Solutions, UW School of Medicine and Public Health

**Robert Wood Johnson Foundation**

Brenda L. Henry, PhD, MPH – Senior Program Officer  
Abbey Cofsky, MPH – Program Officer  
Michelle Larkin, JD, MS, RN – Assistant Vice-President and Deputy Director, Health Group  
James S. Marks, MD, MPH – Senior Vice-President and Group Director, Health Group  
Joe Marx – Senior Communications Officer

Suggested citation: University of Wisconsin Population Health Institute. *County Health Rankings 2012*.



**County Health  
Rankings & Roadmaps**  
A Healthier Nation, County by County

[countyhealthrankings.org](http://countyhealthrankings.org)



**University of Wisconsin Population Health Institute**  
610 Walnut St, #524, Madison, WI 53726  
(608) 265-6370 / [info@countyhealthrankings.org](mailto:info@countyhealthrankings.org)

