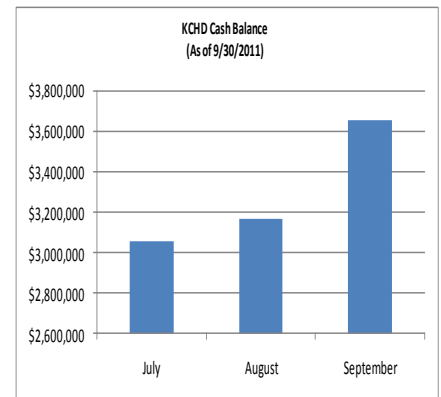
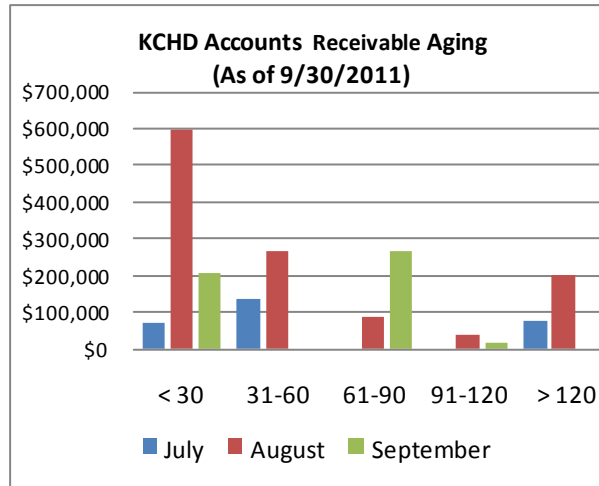


PUBLIC HEALTH COMMITTEE REPORT

**Ten essential services of Public Health**

1. Monitor health status and understand health issues facing the community,
2. Protect people from health problems and health hazards.
3. Give people the information they need to make healthy choices.
4. Engage the community to identify and solve health problems.
5. Develop public health policies and plans.
6. Enforce public health laws and regulations.
7. Help people receive health services.
8. Maintain a competent public health workforce.
9. Evaluate and improve programs and interventions.
10. Contribute to and apply the evidence base of public health.

Finance and Budget report



Accounts receivable and cash balance are presented in comparison with previous months in County Fiscal Year 2011

Essential Service #5

[Develop public health policies and plans](#)



Walk to School Day at Freeman Elementary School, Aurora

**Making Kane County Fit For Kids**

The FIT KIDS 2020 Plan is our community's roadmap to a future in which we have reversed the epidemic of childhood obesity in Kane County!

**Link to Statistics**

- Finance/Budget
- Kane Kares
- Environmental Health
- Communicable Disease
- Health Promotion

[www.kanehealth.com/phc.htm](http://www.kanehealth.com/phc.htm)

### Essential Service #4

Engage the community to identify and solve health problems.



**Results online** This year, for the first time, the results of the community health assessment are available online. Until Nov. 4 we are seeking the input of county residents, policy makers, medical professionals through an online survey, available on the webinar link, to help shape Kane County's 5-year Community Health Improvement Plan.

### Seeking input

In addition to the NIU telephone survey and data collected from other sources, the Health Department and its partners – the five hospitals in the county, the INC Board, United Way of Elgin and the Fox Valley United Way – have conducted a series of focus group meetings and “community cafés” in order to solicit direct feedback from our residents. To view the webinar and survey, please click here [www.kanehealth.com/survey.htm](http://www.kanehealth.com/survey.htm)

### Essential Service #9

Evaluate and improve programs and interventions

**Outcome: Integration of WIC and Family Case Management.**

*Data provided through state performance outcomes for clients in Kane County FCM & WIC.*

Improvements have been demonstrated in this area within the last 6 months, with integration of both programs above the 95% standard.

### Kane County Maternal Child Health Profile

The Health Department has been gathering information on Family Case Management and WIC from the federally qualified health centers and quarterly reports from the Illinois Department of Human Services. The data is being used to evaluate the status and demographics of the current FCM caseload and work collaboratively to ensure positive outcomes. Click on link to view entire document.

